

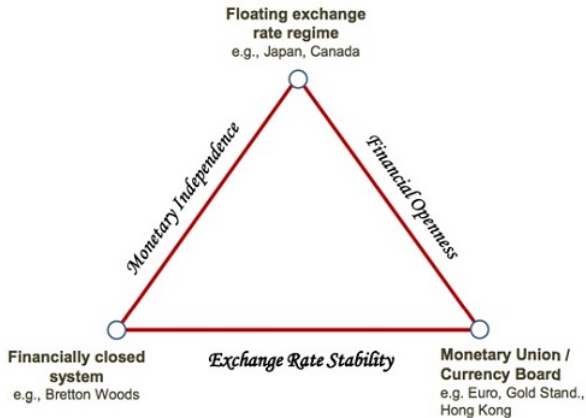
Trilemma, not Dilemma: Financial Globalisation and Monetary Policy Effectiveness

Georgios Georgiadis* Arnaud Mehl*

* European Central Bank

SNB-BIS-FBRD-CEPR Conference on
Spillovers of Conventional and Unconventional Monetary Policy
Zurich, 10 July 2015

The views expressed in the paper are those of the authors and not those of the ECB or of the ESCB.



Motivation: Global financial cycle effects

- Trilemma good description of policy trade-offs historically
Obstfeld et al. (2005)
- FinGlob since 1990: Has trilemma weakened?
Kamin (2010)
- “Consensus”: No
Yellen (2006); Bernanke (2007); Woodford (2007); Weber (2008)

Motivation: Global financial cycle effects

- Trilemma good description of policy trade-offs historically

Obstfeld et al. (2005)

- FinGlob since 1990: Has trilemma weakened?

Kamin (2010)

- “Consensus”: No

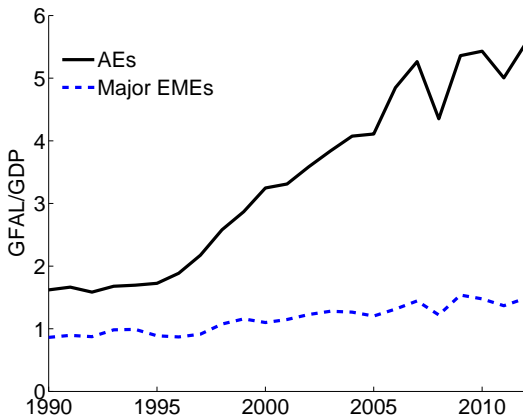
Yellen (2006); Bernanke (2007); Woodford (2007); Weber (2008)

- Has been questioned after financial crisis

Shin (2012); Rey (2013); Bruno and Shin (2013); Agrippino and Rey (2014)

- ▶ Global financial cycles reduce control of domestic interest rates
- ▶ "Dilemma" hypothesis: MP autonomy only with capital controls

Motivation: Global financial cycle effects



Note: The figure displays the cross-country average of economies' gross foreign asset and liability positions relative to GDP. The data are taken from Lane and Milesi-Ferretti (2007) and Benetrix et al. (forthcoming).

Motivation: Net FX exposure effects

- FinGlob has also been associated with economies increasingly being net long in foreign currency
 - ▶ holding foreign assets in *foreign* currency
 - ▶ ...and issuing foreign liabilities in *domestic* currency

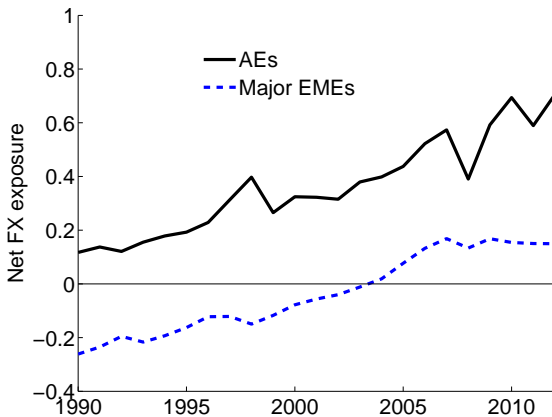
Motivation: Net FX exposure effects

- FinGlob has also been associated with economies increasingly being net long in foreign currency
 - ▶ holding foreign assets in *foreign* currency
 - ▶ ...and issuing foreign liabilities in *domestic* currency
 - ▶ Net FX (NFX) exposures have been rising across AEs and EMEs
Burger et al. (2010); Hausmann and Panizza (2011); Benetrix et al. (forthcoming); Burger et al. (2014); Hale et al. (2014)

Motivation: Net FX exposure effects

- FinGlob has also been associated with economies increasingly being net long in foreign currency
 - ▶ holding foreign assets in *foreign* currency
 - ▶ ...and issuing foreign liabilities in *domestic* currency
 - ▶ Net FX (NFX) exposures have been rising across AEs and EMEs
Burger et al. (2010); Hausmann and Panizza (2011); Benetrix et al. (forthcoming); Burger et al. (2014); Hale et al. (2014)
- NFX exposures strengthen MP effects due to valuation effects
Devereux and Sutherland (2008); Engel and Matsumoto (2009); Meier (2013); Auer (2014)
 - ▶ MP tightening appreciates domestic currency
 - ▶ Home-currency value of foreign assets falls
 - ▶ Home-currency value of foreign liabilities is unchanged
 - ▶ Negative wealth effect on external balance sheet

Motivation: Net FX exposure effects



Note: The figure displays the cross-country average of economies' NFX exposure. The data are taken from Benetrix et al. (forthcoming).

This paper

- Is there evidence in the data for MP effectiveness being
 - ▶ reduced by "*global financial cycle effects*"?
 - ▶ strengthened by "*NFX exposure effects*"?
- Which of the two effects has dominated since the 1990s?
- Has FinGlob affected MP effectiveness differently in AEs/EMEs?

Results

- Evidence both for global financial cycle and NFX exposure effects
 - ▶ Impact of FinGlob on MP effectiveness a priori ambiguous
 - ▶ Depends on relative size of the two effects

Results

- Evidence both for global financial cycle and NFX exposure effects
 - ▶ Impact of FinGlob on MP effectiveness a priori ambiguous
 - ▶ Depends on relative size of the two effects
- Since 1990s FinGlob has
 - ▶ not materially changed MP effectiveness in EA
 - ▶ strengthened noticeably MP effectiveness in AEs and EMEs

Results

- Evidence both for global financial cycle and NFX exposure effects
 - ▶ Impact of FinGlob on MP effectiveness a priori ambiguous
 - ▶ Depends on relative size of the two effects
- Since 1990s FinGlob has
 - ▶ not materially changed MP effectiveness in EA
 - ▶ strengthened noticeably MP effectiveness in AEs and EMEs
- Trilemma remains valid under FinGlob
 - ▶ MP effective due to NFX exposure effects
 - ▶ ...but only if FX flexible

Outline

- 1 Empirical approach
- 2 Domestic effects of MP shock
- 3 Role of FinGlob in differences in MP effectiveness
- 4 Historical change in MP effectiveness due to FinGlob since 1990s
- 5 Robustness checks
- 6 Summary and policy implications

- 1 Empirical approach
- 2 Domestic effects of MP shock
- 3 Role of FinGlob in differences in MP effectiveness
- 4 Historical change in MP effectiveness due to FinGlob since 1990s
- 5 Robustness checks
- 6 Summary and policy implications

Empirical approach

- 1 Estimate real effects of MP for many economies

Empirical approach

- 1 Estimate real effects of MP for many economies
- 2 Regress output responses to MP shock on
 - ▶ standard determinants of MP effectiveness
 - ▶ gross foreign assets/liabilities (*gfa*) \leftrightarrow global financial cycle effects
 - ▶ NFX exposure (*nfx*) \leftrightarrow NFX exposure effects

Empirical approach

- 1 Estimate real effects of MP for many economies
- 2 Regress output responses to MP shock on
 - ▶ standard determinants of MP effectiveness
 - ▶ gross foreign assets/liabilities (*gfa*) ↔ global financial cycle effects
 - ▶ NFX exposure (*nfx*) ↔ NFX exposure effects
- 3 Obtain change in MP effectiveness due to FinGlob since 1990s
 - ▶ coefficient estimates for *gfa* and *nfx*
 - ▶ actual evolution of *gfa* and *nfx* in the data

- 1 Empirical approach
- 2 Domestic effects of MP shock**
- 3 Role of FinGlob in differences in MP effectiveness
- 4 Historical change in MP effectiveness due to FinGlob since 1990s
- 5 Robustness checks
- 6 Summary and policy implications

Estimate domestic real effects of monetary policy

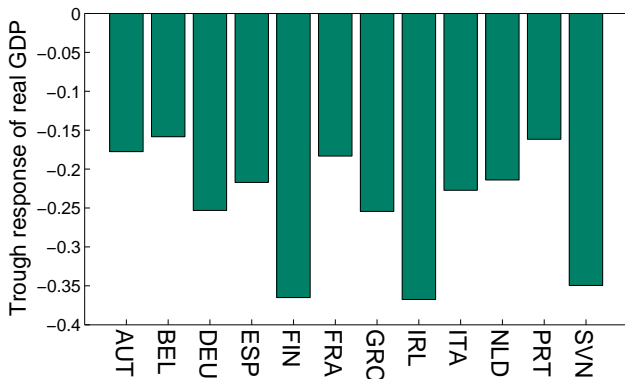
- Focus on EA in baseline
 - ▶ less heterogeneity in determinants of MP effectiveness
 - ▶ need to control for fewer potential determinants of asymmetries
 - ★ bank vs. market-based financial system
 - ★ high vs. low inflation volatility
 - ★ ...
- Estimate mixed cross-section GVAR of Georgiadis (2015)

Data and country coverage

Sample runs from 1999Q1 to 2009Q4, 61 individual economies (12 are treated as EA economies in estimation):

<i>Region</i>	<i>Countries</i>
Indiv. countries/units	ALB, AUS, AUT, BAL, BEL, BGR, BOL, BRA, CAN, CHE, CHL, CHN, COL, CRI, CZE, DEU, DNK, ECB, EGY, ESP, FIN, FRA, GBR, GRC, HKG, HRV, HUN, IDN, IND, IRL, ISR, ITA, JOR, JPN, KOR, LUX, MAR, MEX, MYS, NLD, NOR, NZL, OIL, OPC, PER, PHL, POL, PRT, PRY, ROU, RUS, SGP, SVK, SVN, SWE, THA, TUR, USA, ZAF
Baltics (BAL)	EST, LVA, LTU
Oil exporting countries (OPC)	VEN, ECU, SAU

EA MP shock: Trough responses of real GDP



Note: The figure displays the trough responses of real GDP to a 100 basis points monetary policy shock in the EA identified by sign restrictions. The vertical axis depicts deviations from baseline in percent.

- 1 Empirical approach
- 2 Domestic effects of MP shock
- 3 Role of FinGlob in differences in MP effectiveness**
- 4 Historical change in MP effectiveness due to FinGlob since 1990s
- 5 Robustness checks
- 6 Summary and policy implications

Cross-section regression

Consider

$$s_i = \alpha + \gamma \cdot \mathbf{w}_i + \beta^{gfa} \cdot gfa_i + \beta^{nfx} \cdot nfx_i + u_i, \quad (1)$$

where

- s_i : trough response of real GDP to MP shock
- \mathbf{w}_i : standard determinants of MP effectiveness
 - ▶ labor market rigidities
 - ▶ industry structure
- gfa_i : gross foreign assets and liabilities relative to GDP
- nfx_i : NFX exposure

Cross-section regression

In

$$s_i = \alpha + \gamma \cdot \mathbf{w}_i + \beta^{gfa} \cdot gfa_i + \beta^{nfx} \cdot nfx_i + u_i, \quad (2)$$

MP effectiveness is

- weakened through global financial cycle effects if

$$\beta^{gfa} > 0 \quad (3)$$

- amplified through NFX effects if

$$\beta^{nfx} < 0 \quad (4)$$

GFAL/GDP and NFX exposure

- Gross foreign assets and liabilities
 - ▶ from EWN of Lane and Milesi-Ferretti (2007)
 - ▶ Take $\log(1 + gfa)$ to mitigate the impact of outliers

GFAL/GDP and NFX exposure

- Gross foreign assets and liabilities
 - ▶ from EWN of Lane and Milesi-Ferretti (2007)
 - ▶ Take $\log(1 + gfa)$ to mitigate the impact of outliers
- NFX exposure
 - ▶ from Lane and Shambaugh (2010)
 - ▶ Defined as

$$nfx_{it} \equiv \frac{\partial^N nfa_{it}}{\partial E_{1t} \cdots \partial E_{1Nt}} = (s_{it}^A \cdot \omega_{it}^A - s_{it}^L \cdot \omega_{it}^L) \cdot gfa_{it} \quad (5)$$

- ▶ Higher nfx_{it} implies valuation loss on external balance sheet in response to appreciation of domestic currency

Regression results

Dependent variable: Trough response of real GDP

	(1)	(2)	(3)	(4)
Labor market rigidities	-0.01 (0.20)	-0.01 (0.23)	-0.01 (0.35)	-0.01** (0.03)
Industry mix	-0.01* (0.09)	-0.01+ (0.10)	-0.01+ (0.15)	-0.01* (0.06)
Net FX exposure			-0.05+ (0.19)	-0.22*** (0.00)
GFA/GDP (log)		0.00 (0.88)		0.15*** (0.00)
Adj. R-squared	0.45	0.39	0.48	0.83
Observations	12	12	12	12

p-values in parentheses

Robust standard errors.

+ $p < 0.2$, * $p < 0.1$, ** $p < 0.05$, *** $p < 0.01$

Regression results

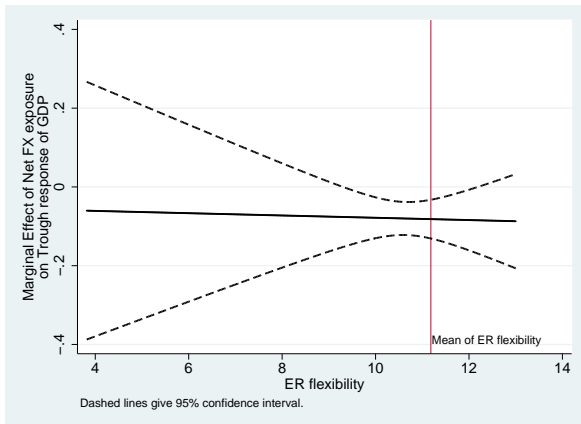
Dependent variable: Trough response of real GDP

	(1)	(2)	(3)	(4)
Labor market rigidities	-0.02** (0.03)	-0.01 (0.22)	-0.01*** (0.00)	-0.01*** (0.00)
Industry mix	-0.01* (0.07)	-0.01** (0.04)	-0.01** (0.04)	-0.01* (0.08)
Net FX exposure	-0.22*** (0.00)	0.06** (0.01)	-0.08*** (0.00)	-0.05 (0.84)
GFA/GDP (log)	0.16*** (0.00)	-0.09*** (0.00)	0.05* (0.06)	0.06+ (0.12)
EA country dummy			-0.17*** (0.00)	-0.16*** (0.00)
EA contiguity dummy			0.12*** (0.00)	0.13*** (0.00)
Domestic credit/GDP (log)			0.11* (0.08)	0.12** (0.03)
Trade/GDP (log)			-0.10** (0.04)	-0.15** (0.04)
Net FX exposure x ER flexibility				-0.00 (0.90)
ER flexibility				-0.01 (0.59)
Observations	12	36	36	36
Adjusted R^2	0.84	0.16	0.72	0.72

p -values in parentheses

Robust standard errors.

Regression results



Note: The figure displays the marginal effect of net foreign currency exposure on the trough response of output to a contractionary domestic monetary policy shock across different degrees of exchange rate flexibility based on the cross-section regression for the expanded country sample with an interaction between the net foreign currency exposure and the exchange rate regime added. A higher value of the exchange rate flexibility variable reflects a more flexible exchange rate regime.

- 1 Empirical approach
- 2 Domestic effects of MP shock
- 3 Role of FinGlob in differences in MP effectiveness
- 4 Historical change in MP effectiveness due to FinGlob since 1990s**
- 5 Robustness checks
- 6 Summary and policy implications

Historical change in MP effectiveness due to FinGlob

Based on

$$s_i = \alpha + \gamma \cdot \mathbf{w}_i + \beta^{gfal} \cdot gfal_i + \beta^{nfx} \cdot nfx_i + u_i, \quad (6)$$

define the cumulative change of MP effectiveness stemming from

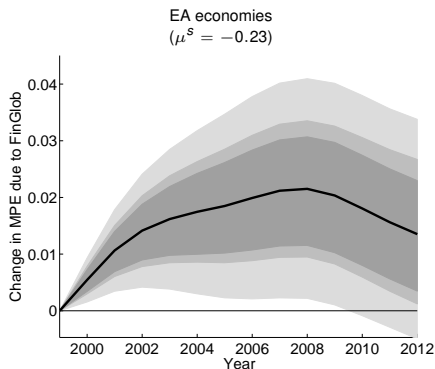
- global financial cycle effects

$$\Delta^{gfal} s_{it} \equiv \sum_{j=1}^t \hat{\beta}^{gfal} \cdot \Delta gfal_{ij} \quad (7)$$

- NFX exposure effects

$$\Delta^{nfx} s_{it} \equiv \sum_{j=1}^t \hat{\beta}^{nfx} \cdot \Delta nfx_{ij} \quad (8)$$

Historical change in MP effectiveness due to FinGlob

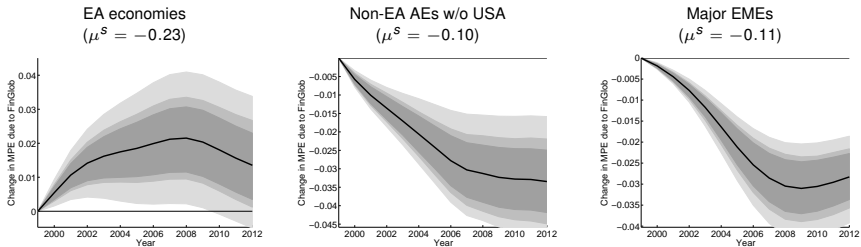


Note: The figure displays the cumulated net effect of financial globalisation on monetary policy effectiveness: A positive value reflects an overall weakening of monetary policy effectiveness due to financial globalisation. The shaded areas represent 90%, 95% and 99% confidence bands obtained from Monte Carlo simulations.

► Heterogeneities

► Benchmark 1990

Historical change in MP effectiveness due to FinGlob



Note: The panels display the cumulated net effect of financial globalisation on monetary policy effectiveness: A positive value reflects an overall weakening of monetary policy effectiveness due to financial globalisation. The shaded areas represent 90%, 95% and 99% confidence bands obtained from Monte Carlo simulations.

- 1 Empirical approach
- 2 Domestic effects of MP shock
- 3 Role of FinGlob in differences in MP effectiveness
- 4 Historical change in MP effectiveness due to FinGlob since 1990s
- 5 Robustness checks**
- 6 Summary and policy implications

Robustness checks

We consider the sensitivity of our results to

- Alternative measures for economies' susceptibility to global financial cycle and NFX exposure effects

Robustness checks

We consider the sensitivity of our results to

- Alternative measures for economies' susceptibility to global financial cycle and NFX exposure effects
- Modifications of expanded country sample

Robustness checks

We consider the sensitivity of our results to

- Alternative measures for economies' susceptibility to global financial cycle and NFX exposure effects
- Modifications of expanded country sample
- Sample size and outliers in EA sample

Robustness checks

We consider the sensitivity of our results to

- Alternative measures for economies' susceptibility to global financial cycle and NFX exposure effects
- Modifications of expanded country sample
- Sample size and outliers in EA sample
- Additional controls in EA sample

Robustness checks

We consider the sensitivity of our results to

- Alternative measures for economies' susceptibility to global financial cycle and NFX exposure effects
- Modifications of expanded country sample
- Sample size and outliers in EA sample
- Additional controls in EA sample
- *De jure* measures of capital account openness

Robustness checks

We consider the sensitivity of our results to

- Alternative measures for economies' susceptibility to global financial cycle and NFX exposure effects
- Modifications of expanded country sample
- Sample size and outliers in EA sample
- Additional controls in EA sample
- *De jure* measures of capital account openness
- Alternative specifications of the MCGSVAR model

Alternative measures for economies' susceptibility to global financial cycle and NFX exposure effects

- FX response-weighted NFX measure
- Netting out intra-EA GFAL positions (IMF CPIS data)
- BIS data on cross-border banking claims
- GFAL relative to domestic credit
- Discrete GFAL buckets
- Price-based measure of FinGlob (equity return correlation)
- Share of US/UK-owned banks in domestic economy
- Share of domestic credit extended by US/UK banks

Alternative measures for economies' susceptibility to global financial cycle and NFX exposure effects

	(1)	(2)	(3)	(4)	(5)	(6)	(7)	(8)	(9)
Labor market rigidities	-0.01** (0.03)	-0.01* (0.05)	-0.01+ (0.11)	-0.01 (0.34)	-0.02** (0.02)	-0.01+ (0.16)	-0.01 (0.53)	-0.01+ (0.18)	-0.01+ (0.17)
Industry mix	-0.01* (0.06)	-0.01+ (0.19)	-0.01+ (0.15)	-0.01+ (0.16)	-0.01+ (0.14)	-0.01* (0.06)	-0.01 (0.21)	-0.01* (0.10)	-0.01+ (0.18)
Net FX exposure	-0.22*** (0.00)		-0.24*** (0.01)	-0.12* (0.09)	-0.13* (0.10)	-0.12*** (0.00)	-0.07+ (0.10)	-0.21* (0.06)	-0.07 (0.27)
GFA/GDP (log)	0.15*** (0.00)	0.11** (0.02)							
Net FX exp. with FX response weights		-0.17*** (0.00)							
GFA/GDP (CPIS, log)			0.15** (0.01)						
BIS banking assets and liab./GDP (log)				0.16+ (0.16)					
GFA to dom. credit (log)					0.10+ (0.18)				
GFA/GDP (log) bucket						0.04*** (0.00)			
Equity return correlation with US							0.17 (0.26)		
Share of US/UK owned banks								0.01* (0.08)	
Share of credit provided by US/UK banks (WDI)									0.00 (0.61)
Adj. R-squared	0.83	0.75	0.64	0.55	0.53	0.77	0.49	0.60	0.42
Observations	12	11	12	12	12	12	12	12	12

p-values in parentheses

Robust standard errors.

+ $p < 0.2$, * $p < 0.1$, ** $p < 0.05$, *** $p < 0.01$

Alternative measures for economies' susceptibility to global financial cycle and NFX exposure effects

	(1)	(2)	(3)	(4)	(5)	(6)	(7)	(8)	(9)	(10)
Labor market rigidities	-0.02** (0.03)	-0.01*** (0.01)	-0.01** (0.02)	-0.01*** (0.01)	-0.00 (0.50)	-0.01*** (0.01)	-0.01*** (0.01)	-0.01** (0.03)	-0.01** (0.02)	-0.01** (0.03)
Industry mix	-0.01* (0.07)	-0.01* (0.05)	-0.01+ (0.13)	-0.01* (0.10)	-0.01* (0.06)	-0.01** (0.04)	-0.01+ (0.14)	-0.01** (0.03)	-0.01* (0.06)	-0.01* (0.06)
Net FX exposure	-0.22*** (0.00)	-0.15*** (0.00)		-0.14*** (0.00)	-0.10** (0.04)	-0.15*** (0.00)	-0.11*** (0.00)	-0.09*** (0.01)	-0.08*** (0.01)	-0.08*** (0.00)
Net FX exp. with FX response weights			-0.00+ (0.10)							
GFA/GDP (log)	0.16*** (0.00)	0.09*** (0.01)	0.01 (0.85)							
GFA/GDP (CPIS, log)				0.07* (0.10)						
BIS banking assets and liab./GDP (log)					0.01 (0.85)					
GFA to dom. credit (log)						0.09** (0.03)				
GFA/GDP (log) bucket							0.03** (0.03)			
Equity return correlation with US								0.11+ (0.10)		
Share of US/UK owned banks									0.00 (0.36)	
Share of credit provided by US/UK banks (WDI)										0.00 (0.21)
EA country dummy		-0.17*** (0.00)	-0.13*** (0.00)	-0.12*** (0.00)	-0.10*** (0.01)	-0.17*** (0.00)	-0.16*** (0.00)	-0.14*** (0.00)	-0.11*** (0.00)	-0.13*** (0.00)
EA contiguity dummy		0.14*** (0.00)	0.09** (0.03)	0.14*** (0.00)	0.14*** (0.01)	0.13*** (0.00)	0.12*** (0.01)	0.11*** (0.01)	0.15*** (0.00)	0.14*** (0.00)

Modifications of expanded country sample

- Only flexible exchange rate regimes
- Advanced economies
- EA aggregate
- No EA economies

Modifications of expanded country sample

	(1)	(2)	(3)	(4)	(5)	(6)
	Baseline EA	All	ERF > 11	AEs	EA aggr.	No EA
Labor market rigidities	-0.02** (0.03)	-0.01*** (0.00)	-0.01*** (0.01)	-0.01 (0.22)	-0.02+ (0.13)	-0.02+ (0.12)
Industry mix	-0.01* (0.07)	-0.01** (0.04)	-0.01* (0.05)	-0.01*** (0.00)	-0.01 (0.39)	-0.01 (0.38)
Net FX exposure	-0.22*** (0.00)	-0.08*** (0.00)	-0.15*** (0.00)	-0.08** (0.03)	-0.14** (0.03)	-0.14** (0.03)
GFA/GDP (log)	0.16*** (0.00)	0.05* (0.06)	0.09*** (0.01)	0.05+ (0.10)	0.10+ (0.14)	0.10+ (0.13)
EA contiguity dummy		0.12*** (0.00)	0.14*** (0.00)	0.15** (0.02)	0.15** (0.01)	0.15** (0.01)
EA country dummy		-0.17*** (0.00)	-0.17*** (0.00)	-0.12*** (0.00)	-0.16*** (0.00)	
Domestic credit/GDP (log)		0.11* (0.08)	0.19*** (0.00)	0.14** (0.01)	0.21* (0.08)	0.21* (0.08)
Trade/GDP (log)		-0.10** (0.04)	-0.06 (0.30)	-0.09+ (0.15)	-0.10 (0.51)	-0.10 (0.49)
Observations	12	36	28	22	15	14
Adjusted R^2	0.84	0.72	0.79	0.86	0.30	0.08

p -values in parentheses

+ $p < 0.2$, * $p < 0.1$, ** $p < 0.05$, *** $p < 0.01$

Sample size and outliers

- Robust and median regressions
- Outliers and additional EA economies
- Principal component of traditional determinants
- Considering only gfa_i and nfx_i

Sample size and outliers for euro area sample

	(1)	(2)	(3)	(4)	(5)	(6)	(7)	(8)	(9)	(10)	(11)
	Baseline	rreg	qreg	W/o IRL	W/o BEL,IRL	W/o NLD,IRL	W/o SVN	+SVK	+SVK,DNK	PC	PC+SVK,DNK
Labor market rigidities	-0.01** (0.03)	-0.01** (0.04)	-0.01* (0.10)	-0.01** (0.04)	-0.01* (0.06)	-0.01** (0.04)	-0.01** (0.05)	-0.01** (0.02)	-0.01 (0.24)		
Industry mix	-0.01* (0.06)	-0.01* (0.09)	-0.01+ (0.12)	-0.01* (0.07)	-0.01* (0.10)	-0.01* (0.09)	-0.01+ (0.14)	-0.01** (0.03)	-0.02*** (0.01)		
Net FX exposure	-0.22*** (0.00)	-0.27*** (0.01)	-0.24*** (0.00)	-0.27*** (0.00)	-0.27*** (0.00)	-0.33*** (0.00)	-0.21*** (0.00)	-0.20*** (0.00)	-0.17*** (0.00)	-0.21*** (0.00)	-0.16** (0.02)
GFA/GDP (log)	0.15*** (0.00)	0.15*** (0.01)	0.17*** (0.00)	0.14*** (0.00)	0.14*** (0.00)	0.14*** (0.00)	0.14*** (0.00)	0.15*** (0.00)	0.12*** (0.01)	0.14*** (0.00)	0.12** (0.01)
PC of traditional determinants										-0.04*** (0.00)	-0.04*** (0.00)
Adj. R-squared	0.83	0.78		0.81	0.77	0.81	0.78	0.77	0.72	0.85	0.67
Observations	12	11	12	11	10	10	11	13	14	12	14

p-values in parentheses

Robust standard errors.

+ $p < 0.2$, * $p < 0.1$, ** $p < 0.05$, *** $p < 0.01$

Additional controls

- Trade integration
- Domestic financial market development
- Financial sector size
- Share of variable-rate housing loans
- Property price growth
- Stressed economy dummy
- Small economy dummy

Additional controls

	(1)	(2)	(3)	(4)	(5)	(6)	(7)	(8)	(9)
Labor market rigidities	-0.01** (0.03)	-0.01* (0.07)	-0.00 (0.40)	-0.01* (0.05)	-0.01* (0.05)	-0.02** (0.01)	-0.02*** (0.01)	-0.01* (0.06)	-0.01** (0.04)
Industry mix	-0.01* (0.06)	-0.01* (0.07)	-0.01** (0.04)	-0.01+ (0.13)	-0.01* (0.07)	-0.00 (0.36)	-0.00* (0.10)	-0.01* (0.09)	-0.01** (0.04)
Net FX exposure	-0.22*** (0.00)	-0.21*** (0.00)	-0.20*** (0.00)	-0.24*** (0.00)	-0.22*** (0.00)	-0.26*** (0.00)	-0.27*** (0.00)	-0.24*** (0.00)	-0.22*** (0.00)
GFA/GDP (log)	0.15*** (0.00)	0.16*** (0.00)	0.10** (0.01)	0.13*** (0.00)	0.15*** (0.00)	0.18*** (0.00)	0.17*** (0.00)	0.16*** (0.00)	0.15*** (0.00)
Trade/GDP (log)		-0.12+ (0.18)							
Domestic credit/GDP (log)			0.19* (0.07)						
Financial sector value added share				1.65 (0.24)					
Variable-rate share in housing loans					0.01 (0.73)				
Average property price increase						0.01* (0.06)			
Maximum property price increase							0.08*** (0.00)		
Stressed dummy								0.03+ (0.16)	
Small country dummy									-0.02 (0.24)
Adj. R-squared	0.83	0.83	0.89	0.85	0.81	0.87	0.90	0.86	0.84
Observations	12	12	12	12	12	12	12	12	12

p-values in parentheses

Robust standard errors.

+ $p < 0.2$, * $p < 0.1$, ** $p < 0.05$, *** $p < 0.01$

De jure measures of capital account openness

- Use *kaopen* of Chinn and Ito (2003)
- Results very similar when using Quinn and Toyoda (2008) or Fernández et al. (2015)

De jure measures of capital account openness

	(1)	(2)	(3)	(4)	(5)	(6)	(7)
	Baseline EA	Baseline Exp.	kaopen	EA aggr.	kaopen	No EA	kaopen
Labor market rigidities	-0.02** (0.03)	-0.01*** (0.01)	-0.01** (0.02)	-0.02+ (0.13)	-0.02 (0.28)	-0.02+ (0.12)	-0.02 (0.26)
Industry mix	-0.01* (0.07)	-0.01* (0.05)	-0.01** (0.04)	-0.01 (0.39)	-0.01 (0.32)	-0.01 (0.38)	-0.01 (0.31)
Net FX exposure	-0.22*** (0.00)	-0.15*** (0.00)	-0.08*** (0.01)	-0.14** (0.03)	-0.08* (0.05)	-0.14** (0.03)	-0.08** (0.05)
GFA/GDP (log)	0.16*** (0.00)	0.09*** (0.01)		0.10+ (0.14)		0.10+ (0.13)	
Chinn and Ito (2003): kaopen index			0.01 (0.38)		0.01 (0.57)		0.01 (0.56)
EA contiguity dummy		0.14*** (0.00)	0.12*** (0.00)	0.15** (0.01)	0.13** (0.03)	0.15** (0.01)	0.13** (0.03)
Domestic credit/GDP (log)		0.19*** (0.00)	0.17** (0.02)	0.21* (0.08)	0.18 (0.23)	0.21* (0.08)	0.18 (0.22)
Trade/GDP (log)		-0.06 (0.30)	0.00 (0.97)	-0.10 (0.51)	-0.03 (0.90)	-0.10 (0.49)	-0.03 (0.89)
EA dummy		-0.17*** (0.00)	-0.14*** (0.00)	-0.16*** (0.00)	-0.14*** (0.00)		
Observations	12	28	28	15	15	14	14
Adjusted R^2	0.84	0.79	0.73	0.30	0.20	0.08	-0.05

p-values in parentheses

+ $p < 0.2$, * $p < 0.1$, ** $p < 0.05$, *** $p < 0.01$

Alternative specifications of the MCGSVAR model

- Long-term interest rates
- VIX
- Financial sector size
- Higher lag orders

Alternative specifications of the MCGSVAR model

	(1)	(2)	(3)	(4)
	Baseline	LT rates	VIX	Lag 2
Labor market rigidities	-0.01** (0.03)	-0.01*** (0.00)	-0.01*** (0.01)	-0.01* (0.06)
Industry mix	-0.01* (0.06)	-0.01** (0.04)	-0.01** (0.02)	-0.01* (0.05)
Net FX exposure	-0.22*** (0.00)	-0.21*** (0.00)	-0.19*** (0.00)	-0.20*** (0.00)
GFA/GDP (log)	0.15*** (0.00)	0.13*** (0.00)	0.13*** (0.00)	0.08* (0.07)
Adj. R-squared	0.83	0.91	0.87	0.85
Observations	12	12	12	12

p-values in parentheses

Robust standard errors.

+ $p < 0.2$, * $p < 0.1$, ** $p < 0.05$, *** $p < 0.01$

- 1 Empirical approach
- 2 Domestic effects of MP shock
- 3 Role of FinGlob in differences in MP effectiveness
- 4 Historical change in MP effectiveness due to FinGlob since 1990s
- 5 Robustness checks
- 6 Summary and policy implications**

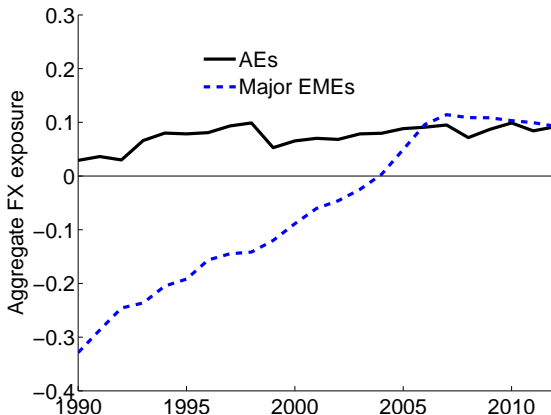
Summary

- A priori FinGlob has an ambiguous impact on MP effectiveness
 - ▶ global financial cycle effects
 - ▶ NFX exposure effects
- FinGlob has strengthened MP effectiveness in AEs and EMEs
- Trilemma remains valid under FinGlob
 - ▶ MP effective due to NFX exposure effects
 - ▶ if FX flexible
- FinGlob changes MP transmission, even if effectiveness is preserved
 - ▶ Interest rate channel loses significance
 - ▶ Exchange rate channel getting more important

- Agrippino, S., Rey, H., 2014. World Asset Markets and the Global Financial Cycle. mimeo.
- Auer, S., 2014. Monetary Policy Shocks and Foreign Investment Income: Evidence from a Large Bayesian VAR. Swiss National Bank Working Paper 2014-02.
- Benetrix, A., Lane, P., Shambaugh, J., forthcoming. International Currency Exposures, Valuation Effects and the Global Financial Crisis. *Journal of International Economics*.
- Bernanke, B., 2007. Globalization and Monetary Policy. Speech at the Fourth Economic Summit, Stanford Institute for Economic Policy Research.
- Bruno, V., Shin, H., 2013. Capital Flows and the Risk-Taking Channel of Monetary Policy. mimeo, Princeton University.
- Burger, J., Sengupta, R., Warnock, F., Warnock, V., 2014. US Investment in Global Bonds: As the Fed Pushes, Some EMEs Pull. NBER Working Paper 20571.
- Burger, J., Warnock, F., Warnock, V., 2010. Emerging Local Currency Bond Markets. NBER Working Paper 16249.
- Cashin, P., Mohaddes, K., Raissi, M., Raissi, M., 2012. The Differential Effects of Oil Demand and Supply Shocks on the Global Economy. IMF Working Paper 03/34.
- Chinn, M., Ito, H., 2003. A New Measure of Capital Account Openness. *Journal of Comparative Policy Analysis* 10 (3), 309–322.
- Chudik, A., Fidora, M., 2011. Using the Global Dimension to Identify Shocks with Sign Restrictions. ECB Working Paper 1318.
- Chudik, A., Pesaran, M. H., 2011. Infinite-Dimensional VARs and Factor Models. *Journal of Econometrics* 163 (1), 4–22.
- Devereux, M. B., Sutherland, A., 2008. Financial Globalization and Monetary Policy. *Journal of Monetary Economics* 55 (8), 1363–1375.
- Eickmeier, S., Ng, T., 2011. How Do Credit Supply Shocks Propagate Internationally? A GVAR Approach. CEPR Discussion Paper 8720.
- Engel, C., Matsumoto, A., 2009. The International Diversification Puzzle When Goods Prices Are Sticky: It's Really about Exchange-Rate Hedging, Not Equity Portfolios. *American Economic Journal: Macroeconomics* 1 (2), 155–88.
- Fernández, A., Klein, M., Rebucci, A., Schindler, M., Uribe, M., 2015. Capital Control Measures: A New Dataset. NBER Working Papers 20970, National Bureau of Economic Research.
- Georgiadis, G., 2015. Examining Asymmetries in the Transmission of Monetary Policy in the Euro Area: Evidence from a Mixed Cross-Section Global VAR Model. *European Economic Review* 75 (C), 195–215.
- Hale, G., Jones, P., Spiegel, M., 2014. The Rise in Home Currency Issuance. Federal Reserve Bank of San Francisco Working Paper 2014-19.
- Hausmann, R., Panizza, U., 2011. Redemption or Abstinence? Original Sin, Currency Mismatches and Counter Cyclical Policies in the New Millennium. *Journal of Globalization and Development* 2 (1), 1–35.
- Kamin, S., 2010. Financial Globalization and Monetary Policy. *International Finance Discussion Papers* 1002.

- Lane, P., Shambaugh, J., 2010. Financial Exchange Rates and International Currency Exposures. *American Economic Review* 100 (1), 518–40.
- Lane, P. R., Milesi-Ferretti, G. M., 2007. The External Wealth of Nations Mark II: Revised and Extended Estimates of Foreign Assets and Liabilities, 1970-2004. *Journal of International Economics* 73 (2), 223–250.
- Meier, S., 2013. Financial Globalization and Monetary Transmission. Federal Reserve Bank of Dallas Globalization and Monetary Policy Institute Working Paper 145.
- Obstfeld, M., Shambaugh, J., Taylor, A., 2005. The Trilemma in History: Tradeoffs Among Exchange Rates, Monetary Policies, and Capital Mobility. *The Review of Economics and Statistics* 87 (3), 423–438.
- Quinn, D., Toyoda, M., 2008. Does Capital Account Liberalization Lead to Growth? *Review of Financial Studies* 21 (3), 1403–1449.
- Rey, H., 2013. Dilemma not Trilemma: The Global Cycle and Monetary Policy Independence. *Proceedings - Economic Policy Symposium - Jackson Hole*, 1–2.
- Shin, H. S., 2012. Global Banking Glut and Loan Risk Premium. *IMF Economic Review* 60 (2), 155–192.
- Uhlig, H., 2005. What Are the Effects of Monetary Policy on Output? Results from an Agnostic Identification Procedure. *Journal of Monetary Economics* 52 (2), 381–419.
- Weber, A., 2008. Globalisation, Monetary Policy and the Euro. Speech at the Norges Bank Conference on Monetary Policy - Jarle Berge Colloquium - "Globalisation and Monetary Policy".
- Woodford, M., 2007. Globalization and Monetary Control. In: *International Dimensions of Monetary Policy*. NBER Chapters. National Bureau of Economic Research, pp. 13–77.
- Yellen, J., 2006. Monetary Policy in a Global Environment. Speech at The Euro and the Dollar in a Globalized Economy Conference.

Aggregate FX exposure effects



Note: The figure displays the cross-country average of economies' aggregate foreign currency exposure. The data are taken from Benetrix et al. (forthcoming).

The GVAR

- The GVAR builds on country-specific VARX models

$$\mathbf{x}_{it} = \mathbf{a}_i + \sum_{j=1}^{p_i} \Phi_{ij} \cdot \mathbf{x}_{i,t-j} + \sum_{j=0}^{p_i^*} \Gamma_{ij} \cdot \mathbf{x}_{i,t-j}^* + \mathbf{u}_{it}, \quad i = 1, 2, \dots, N, \quad (9)$$

- In MCSGVAR
 - ▶ different types of cross-sectional units i (central bank, economy)
 - ▶ foreign variables \mathbf{x}^* are based on different types of weights

Domestic and foreign variables

- Weights: trade weights, GDP PPP weights, unit weight
- Non-EA economies
 - x_{it} : real GDP, CPI, short-term interest rates, nom. bil. euro FX
 - x_{it}^* : real GDP, CPI, short-term interest rates, oil prices
- EA economies
 - x_{it} : real GDP, CPI
 - x_{it}^* : real GDP, CPI, "ECB" short-term interest rates, (non-EA) short-term interest rates, nom. bil. euro FX, oil prices
- "ECB"
 - x_{it} : short-term interest rates
 - x_{it}^* : real GDP, CPI, short-term interest rates, oil prices, nom. bil. euro FX
- Oil block
 - x_{it} : Oil prices
 - x_{it}^* : real GDP, CPI, short-term interest rates

Empirical model specification

- US economy treated as a dominant unit

Chudik and Pesaran (2011)

- Model estimated in first differences

- ▶ Facilitates to ensure stability
- ▶ No "pragmatic" determination of co-integrating rank
- ▶ No assumption of weak exogeneity needed

- MP shock identified by sign restrictions on EA aggregate

Uhlig (2005); Chudik and Fidora (2011); Eickmeier and Ng (2011); Cashin et al. (2012)

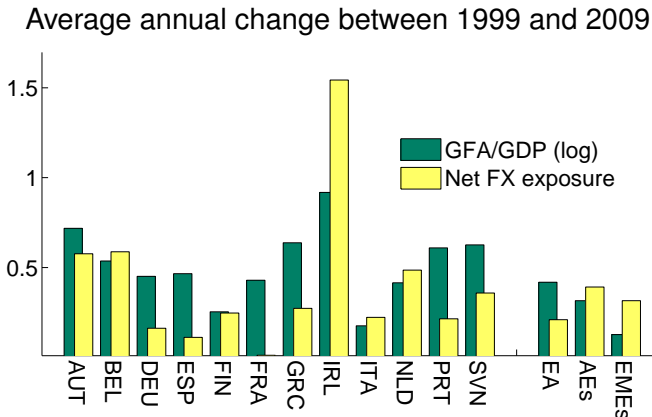
- ▶ EA short-term interest rate rises on impact
- ▶ EA inflation negative in fourth quarter after shock
- ▶ Nominal euro effective exchange rate appreciates on impact

Descriptive statistics for 1999 to 2009

	mean	min	max	sd
Trough response of GDP	-0.24	-0.37	-0.16	0.08
Industry mix	-0.31	-3.87	3.42	2.72
Labor market rigidities	-0.55	-5.04	3.25	2.55
Net FX exposure	0.28	-0.12	1.51	0.43
GFA/GDP (log)	1.64	0.94	3.01	0.57

► [Return to data description](#)

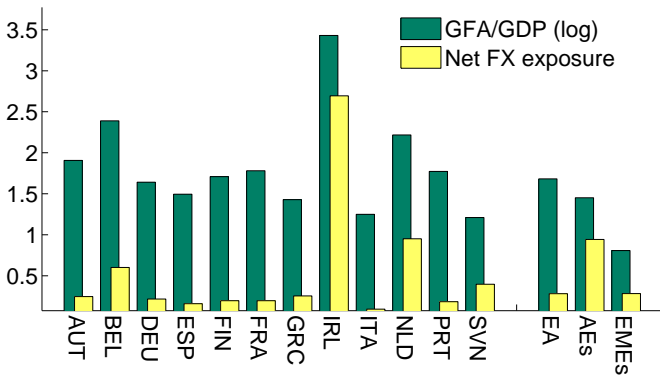
GFA/GDP and NFX exposure



Note: The figure shows the average annual change in the gross foreign asset and liability position relative to GDP as well as the NFX exposure. Advanced economies exclude the EA and the US; emerging economies exclude China.

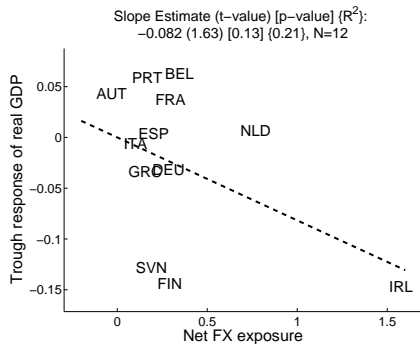
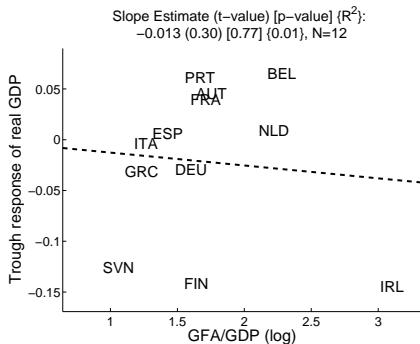
GFA/GDP and NFX exposure

Average over 1999-2009



Note: The figure shows the average gross foreign asset and liability position relative to GDP as well as the NFX exposure over the sample period. Advanced economies exclude the EA and the US; emerging economies exclude China.

Trough responses of real GDP to MP shock, GFA/GDP and NFX exposures



Note: The figure displays unconditional correlations between gfa_i , nfx_i and the trough responses of real GDP to a contractionary monetary policy shock.

GFA/GDP and NFX exposure

	Change 1999-2009		2009 level	
	GFA/GDP (log)	Net FX exp.	GFA/GDP (log)	Net FX exp.
AUT	0.72	0.58	1.91	0.25
BEL	0.54	0.59	2.39	0.60
DEU	0.45	0.16	1.64	0.22
ESP	0.47	0.11	1.49	0.16
FIN	0.25	0.25	1.71	0.20
FRA	0.43	0.01	1.78	0.20
GRC	0.64	0.27	1.43	0.25
IRL	0.92	1.54	3.43	2.69
ITA	0.18	0.22	1.25	0.09
NLD	0.42	0.49	2.22	0.95
PRT	0.61	0.21	1.77	0.18
SVN	0.63	0.36	1.21	0.40
EA	0.42	0.21	1.68	0.28
AEs	0.31	0.39	1.44	0.93
EMEs	0.10	0.29	0.82	0.19

Economic significance

Economically significant impact of

- global financial cycle effects

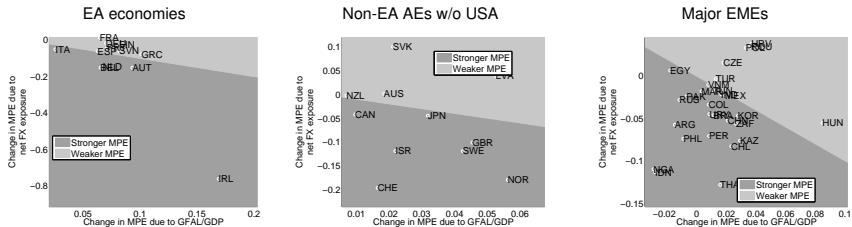
$$\begin{aligned}\Delta^{gfa} s_i &= \widehat{\beta}^{gfa} \cdot \sigma^{gfa} \\ &= 0.14 \cdot 0.57 \\ &= 0.08 \quad (\approx 0.3\mu^s, \approx \sigma^s)\end{aligned}\tag{10}$$

- NFX exposure effects

$$\begin{aligned}\Delta^{nfx} s_i &= \widehat{\beta}^{nfx} \cdot \sigma^{nfx} \\ &= -0.21 \cdot 0.43 \\ &= -0.09 \quad (\approx 0.3\mu^s, \approx \sigma^s)\end{aligned}\tag{11}$$

on MP effectiveness.

Heterogeneities

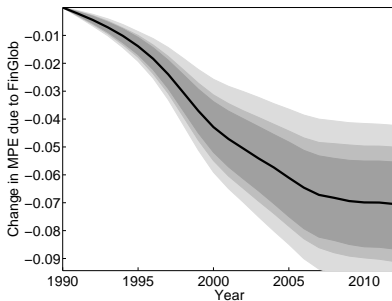


Note: The figure displays the changes in the impact of monetary policy on output that is due to the global financial cycle and net foreign currency exposure effects; the shaded areas indicate whether the former effect outweighs the latter and vice versa.

Benchmark period 1990

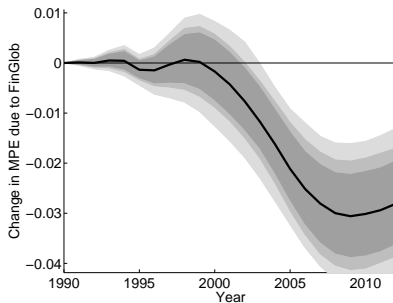
Non-EA AEs w/o USA

($\mu^S = -0.10$)



Major EMEs w/o CHN

($\mu^S = -0.11$)



Note: The figure displays the changes in the impact of monetary policy on output that is due to the global financial cycle and NFX exposure effects; the shaded areas indicate whether the former effect outweighs the latter and vice versa.